

ASHTON CEMETERY

1952 ADDITION

SCALE: 1" = 20'

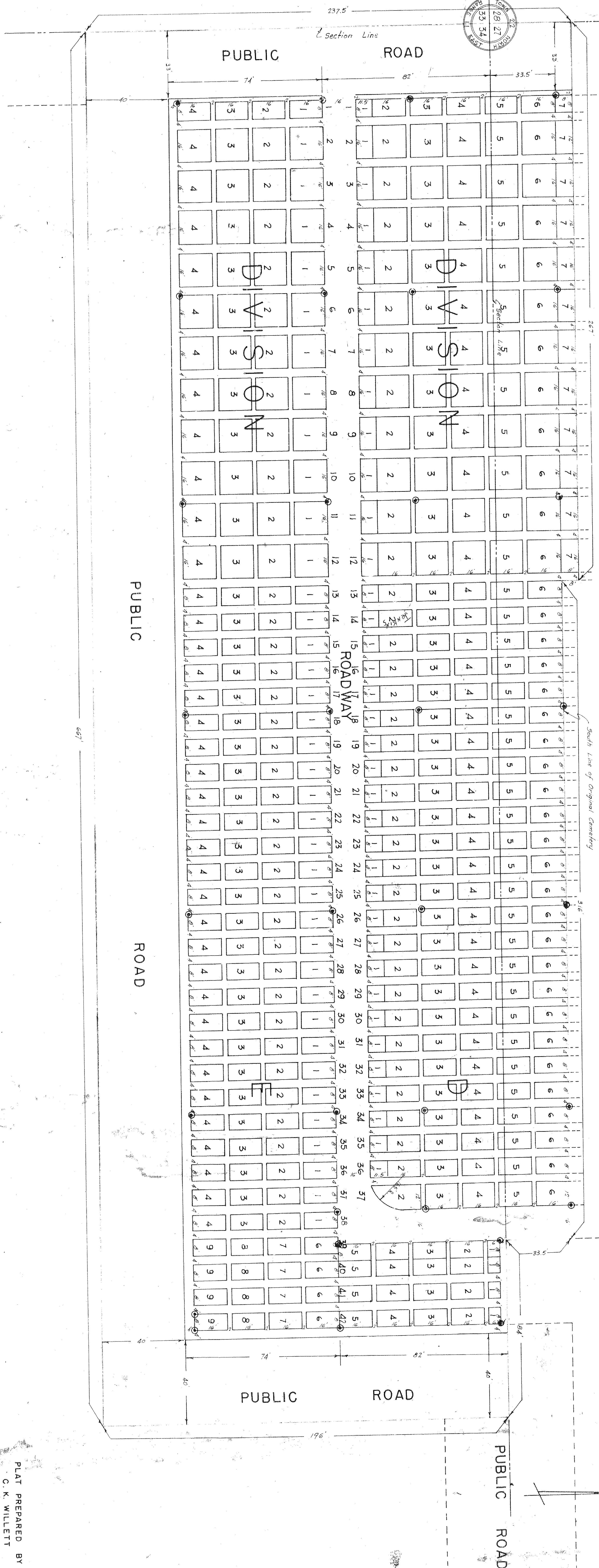
ORIGINAL

CEMETERY

DIVISION D
 45 LOTS AT 15' X 16'
 4 LOTS AT 12' X 16'
 136 LOTS AT 8' X 16'
 11 LOTS AT 11.5' X 16'
 25 LOTS AT 11.5' X 8'
 1 LOT AT 8' X 8'
 1 LOT AT 24.5' X 12' (WITH DIAMUS 0.95)
 TOTAL NO. OF LOTS - 233
 NORTH - SOUTH WALKS 4' WIDE
 EAST - WEST WALKS 2' WIDE

DIVISION E
 4 LOTS AT 15' X 16'
 143 LOTS AT 8' X 16'
 4 LOTS AT 8' X 8'
 TOTAL NO. OF LOTS - 148
 NORTH - SOUTH WALKS - 4' WIDE
 EAST - WEST WALKS - 2' WIDE

Set Control Points (Iron Pipes)



PLAT PREPARED BY
 C. K. WILLETT
 CONSULTING ENGINEERS
 DIXON, ILLINOIS